

Specifications

| Models | S-60 / S-60 TraX | | S-65 / S-65 TraX | |
|---------------------------------------|------------------|-------------|------------------|-------------|
| Measurements | Metric | US | Metric | US |
| Working height maximum* (on tyres) | 20.30 m | 66 ft | 21.80 m | 71 ft |
| Working height maximum* (with TraX) | 20.30 m | 66 ft | 21.80 m | 71 ft 2 in |
| Platform height maximum (on tyres) | 18.30 m | 60 ft | 19.80 m | 65 ft |
| Platform height maximum (with TraX) | 18.30 m | 60 ft | 19.80 m | 65 ft 2 in |
| Horizontal reach maximum | 15.48 m | 50 ft 10 in | 17.10 m | 56 ft 2 in |
| Below ground reach | 1.70 m | 5 ft 7 in | 2.72 m | 8 ft 11 in |
| A Platform length - 8 ft model | 0.91 m | 3 ft | 0.91 m | 3 ft |
| Platform length - 6 ft model | 0.76 m | 2 ft 6 in | 0.76 m | 2 ft 6 in |
| B Platform width - 8 ft model | 2.44 m | 8 ft | 2.44 m | 8 ft |
| Platform width - 6 ft model | 1.83 m | 6 ft | 1.83 m | 6 ft |
| C Height - stowed | 2.72 m | 8 ft 11 in | 2.72 m | 8 ft 11 in |
| - stowed with TraX | 2.77 m | 9 ft 1 in | 2.77 m | 9 ft 1 in |
| D Length - stowed | 8.46 m | 27 ft 9 in | 9.42 m | 30 ft 11 in |
| Length - transport (jib tucked under) | | | 7.60 m | 25 ft |
| E Width - with standard tyres | 2.49 m | 8 ft 2 in | 2.49 m | 8 ft 2 in |
| - with TraX | 2.59 m | 8 ft 6 in | 2.59 m | 8 ft 6 in |
| F Wheelbase | 2.51 m | 8 ft 3 in | 2.51 m | 8 ft 3 in |
| G Ground clearance - center | 0.37 m | 1 ft 2.5 in | 0.37 m | 1 ft 2.5 in |
| - centre TraX | 0.43 m | 1 ft 5 in | 0.43 m | 1 ft 5 in |

Productivity

| | | | | |
|--------------------------------------|----------------------|------------|----------------------|------------|
| Lift capacity | 227 kg | 500 lbs | 227 kg | 500 lbs |
| Platform rotation | 160° | 160° | 160° | 160° |
| Vertical jib rotation | | | 135° (+78° /-57°) | |
| Turntable rotation | 360° continuous | | 360° continuous | |
| Turntable tailswing (on tyres) | 1.22 m | 4 ft | 1.22 m | 4 ft |
| Turntable tailswing (with TraX) | 1.14 m | 3 ft 9 in | 1.14 m | 3 ft 9 in |
| Drive speed - 2WD stowed (on tyres) | 6.4 km/h | 4.0 mph | 6.4 km/h | 4.0 mph |
| Drive speed - 4WD stowed (on tyres) | 4.8 km/h | 3.0 mph | 4.8 km/h | 3.0 mph |
| Drive speed - 4WD stowed (with TraX) | 3.7 km/h | 2.3 mph | 3.7 km/h | 2.3 mph |
| Drive speed - raised or extended | 1.1 km/h | 0.68 mph | 1.1 km/h | 0.68 mph |
| Gradeability** stowed - 2WD | 30% | 30% | 30% | 30% |
| Gradeability** stowed - 4WD | 45% | 45% | 45% | 45% |
| Turning radius - inside | 2.40 m | 7 ft 9 in | 2.40 m | 7 ft 9 in |
| - inside with TraX | 3.66 m | 12 ft | 3.66 m | 12 ft |
| Turning radius - outside | 5.54 m | 18 ft 2 in | 5.54 m | 18 ft 2 in |
| - outside with TraX | 6.80 m | 22 ft 3 in | 6.80 m | 22 ft 3 in |
| Controls | 12 V DC proportional | | 12 V DC proportional | |
| Tyres - RT air filled | 355/55D 625 | | 355/55D 625 | |
| TraX - track system - 4 point | Loeering QTS-R42 | | Loeering QTS-R42 | |
| Ground Pressure (with TraX) | 1,146 kg/sqm | 11.24 kPa | 1,210 kg/sqm | 11.87 kPa |

Power

| | | | | |
|-------------------------|---|---------|---------|---------|
| Power source | Deutz D 2011 L03i 3 cylinder diesel 36 kW (48 hp) Perkins 404D-22 4 cylinder diesel 38 kW (51 hp) Deutz TD2011 L04i 4 cylinder turbo diesel 55 kW (74 hp) | | | |
| Auxiliary power unit | 12 V DC | 12 V DC | 12 V DC | 12 V DC |
| Hydraulic tank capacity | 170 L | 45 gal | 170 L | 45 gal |
| Fuel tank capacity | 132 L | 35 gal | 132 L | 35 gal |

Sound & Vibration Levels

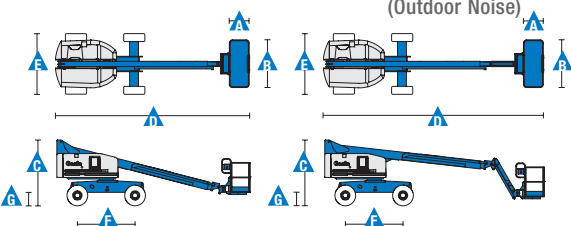
| | | | | |
|---|-----------------------|---------------------------|-----------------------|---------------------------|
| Sound pressure level (ground workstation) | 83 dBA | 83 dBA | 83 dBA | 83 dBA |
| Sound pressure level (platform workstation) | 79 dBA | 79 dBA | 79 dBA | 79 dBA |
| Vibration | <2.5 m/s ² | <8 ft 2 in/s ² | <2.5 m/s ² | <8 ft 2 in/s ² |

Weight***

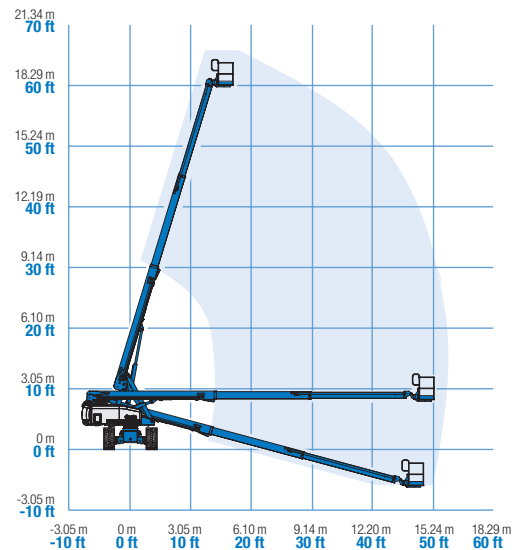
| | | | | |
|----------------------|------------|-------------|------------|-------------|
| 2WD (CE air tyres) | 9,308 kg | 20,520 lbs | 10,024 kg | 22,100 lbs |
| 4WD (CE air tyres) | 9,385 kg | 20,690 lbs | 10,102 kg | 22,270 lbs |
| CE Foam Filled tyres | add 347 kg | add 764 lbs | add 347 kg | add 764 lbs |
| 4 WD (Track system) | 11,353 kg | 25,430 lbs | 12,229 kg | 26,960 lbs |

Standards Compliance

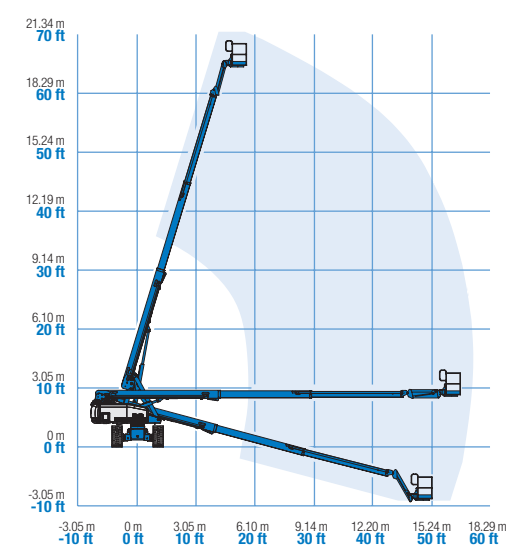
EU Directives: 2006/42/EC - Machinery (harmonized standard EN280:2001+A2:2009); 2004/108/EC (EMC); 2000/14/EC (Outdoor Noise)



Range of Motion S-60 / S-60 TraX



Range of Motion S-65 / S-65 TraX



* The metric equivalent of working height adds 2 m to platform height. U.S. adds 6 ft to platform height.

** Gradeability applies to driving on slopes, see operator's manual for details regarding slope ratings.

*** Weight will vary depending on options and/or country standards.

Features

| Standard Features | Easily Configured To Meet Your Needs | Options & Accessories |
|-------------------|--------------------------------------|-----------------------|
|-------------------|--------------------------------------|-----------------------|

Measurements

S-60, S-60 TraX

- 20.30 m (66 ft) working height
- 15.50 m (50 ft 10 in) horizontal reach
- 227 kg (500 lb) lift capacity

S-65, S-65 TraX

- 21.80 m (71 ft) working height
- 17.10 m (56 ft 2 in) horizontal reach
- 227 kg (500 lb) lift capacity

Productivity

- Self-levelling platform
- Hydraulic platform rotation
- Proportional joystick controls
- Thumb rocker steering
- Drive enable
- AC power cord to platform
- Tilt alarm
- Descent & travel alarms
- Flashing beacon
- Horn
- Hour meter
- 360° continuous turntable rotation
- Locking turntable covers
- Positive traction drive
- Two speed wheel motors
- Certified load sensor

Power

- 12 V DC auxiliary power
- Anti-restart engine protection
- Auto engine fault shutdown
- Intake air heater (Deutz engine)

Platform Options

- Steel 1.22 m (4 ft)
- Steel 2.44 m (8 ft) (standard)
- Steel 1.83 m (6 ft)
- Steel 2.44 m (8 ft) tri-entry

Jib Options

- Non-jib
- 1.52 m (5 ft) articulating jib boom

Engine Options

- Deutz diesel 36 kW (48 hp)
- Perkins diesel 38 kW (51 hp)
- Deutz diesel 55 kW (74 hp)

Drive Options

- 2 x 4
- 4 x 4

Axle Options

- Active oscillation (4WD)
- Non-oscillating (2WD)

Tyre Options

- Rough terrain air-filled (standard)
- Rough terrain foam-filled (water base)
- Rough terrain non-marking air or foam-filled
- Sealant treated air-filled
- Loegering track system

Productivity Options

- Platform top auxiliary rail
- Weld leads to platform ⁽¹⁾
- Air line to platform ^{(1), (4)}
- Power to platform (incl. plug, socket and ground fault interrupt leakage on request)
- Work lights package (2 on chassis, 2 on platform)
- Dual axis joystick steering
- Second battery
- Hydraulic oil cooler
- Biodegradable hydraulic oil ⁽¹⁾
- Hostile environment kit ⁽¹⁾: cylinder bellows, boom wiper seals, platform and ground control box cover
- Deluxe hostile environment kit ^(1,2): adds to basic kit center turntable shield, ring gear guard, tail pipe guard, engine cover flaps and air pre-cleaner
- Aircraft protection kit ^(1,2): platform foam padding and padded disable system
- Tilt cut-out option
- Track & Trace ⁽³⁾ (GPS unit providing machine location & operating information)
- Panel cradle package ^(1,2)
- Lockable platform & ground control box covers
- Second battery
- Tow package ⁽¹⁾
- Tool tray
- Operator Protective Structure
- Operator Protective Alarm

Power Options

- Engine gauge package ⁽¹⁾: oil pressure, temp & amp
- AC generator packages (110V/60Hz - 220V/50Hz, 3000 W) ⁽¹⁾
- Hydraulic MTE generator kit (110V/120V-220V/240V)
- Deutz V-Belt Generator kit (110V/220V) ⁽²⁾
- Diesel air intake pre-cleaner ^(1,2)
- Diesel catalytic scrubber muffler ⁽¹⁾
- Low temperature cut-out module
- Engine heater ⁽²⁾
- Refinery kit with spark arrestor and electric or mechanical Chalwyn valve ⁽²⁾



⁽¹⁾ Factory-fit option only
⁽²⁾ Available on selected models only. See your Genie representative for further information.
⁽³⁾ Includes a first 2 years subscription
⁽⁴⁾ Air line to platform not compatible with Weld leads to platform

United Kingdom

The Maltings, Wharf Road, Grantham NG31 6BH, T: +44 800 988 3739 (toll free), Fax +44 (0)1476 584334, Email AWP-InfoEurope@terex.com
 Visit www.genielift.co.uk/locations to view our global locations list.

Worldwide Manufacturing And Distribution

Australia · Brazil · Caribbean · Central America · China · France · Germany · Italy · Japan · Korea · Mexico · Russia · Southeast Asia · Spain · Sweden · United Arab Emirates · United Kingdom · United States

Effective Date: February, 2014. Product specifications and prices are subject to change without notice or obligation. The photographs and/or drawings in this document are for illustrative purposes only. Refer to the appropriate Operator's Manual for instructions on the proper use of this equipment. Failure to follow the appropriate Operator's Manual when using our equipment or to otherwise act irresponsibly may result in serious injury or death. The only warranty applicable to our equipment is the standard written warranty applicable to the particular product and sale and we make no other warranty, express or implied. Products and services listed may be trademarks, service marks or trade names of Terex Corporation and/or their subsidiaries in the USA and many other countries. Genie is a registered trademark of Terex South Dakota, Inc. © 2014 Terex Corporation.

